

SCIENTIFIC PROGRAM COMMITTEE

Applying Big Data,
Artificial
Intelligence and
Telemedicine in
Ophthalmology in
The Era of Covid-19

CONVENER



Daniel TING
(Singapore)

COORDINATOR



Jost JONAS
(Germany)

COORDINATOR



Carol CHEUNG
(Hong Kong, China)

SECRETARY



Anran RAN
(Hong Kong, China)

CHAIR



Charles MCGHEE
(New Zealand)

CONVENER



Karl GOLNIK
(United States)

COORDINATOR



David MACKEY
(Australia)

COORDINATOR



Wai-ching LAM
(Hong Kong, China)

SECRETARY



Haoyu CHEN
(China)

Evolving
Academia,
Research,
Teaching and
Education in
Ophthalmology in
The Era of Covid-19

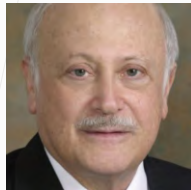
New Approaches to
Patient
Management and
Dealing with Unmet
Need in The Era of
Covid-19

CONVENER



Tien-yin WONG
(Singapore)

COORDINATOR



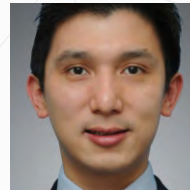
Robert RITCH
(United States)

COORDINATOR



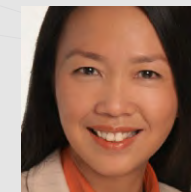
Kelvin CHONG
(Hong Kong, China)

SECRETARY



Raymond WONG
(Hong Kong, China)

CONVENER



Soon Phaik CHEE
(Singapore)

COORDINATOR



David LOCKINGTON
(United Kingdom)

COORDINATOR



Ke YAO
(China)

SECRETARY



Vanissa CHOW
(Hong Kong, China)

Cataract and
Cataract
Surgery



SCIENTIFIC PROGRAM COMMITTEE

CHAIR



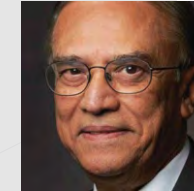
Charles MCGHEE
(New Zealand)

CONVENER



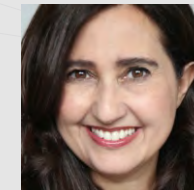
Peter MCCLUSKEY
(Australia)

COORDINATOR



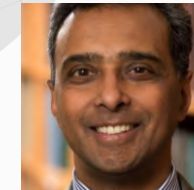
Narsing RAO
(United States)

CONVENER



Helen DANESH-MEYER
(New Zealand)

COORDINATOR



Prem SUBRAMANIAN
(United States)

COORDINATOR



Peizeng YANG
(China)

SECRETARY



Shaheeda MOHAMED
(Hong Kong, China)

COORDINATOR



Satoshi KASHII
(Japan)

SECRETARY



Carmen CHAN
(Hong Kong, China)

COORDINATOR



Alvin YOUNG
(Hong Kong, China)

SECRETARY



Kelvin WAN
(Hong Kong, China)

COORDINATOR



Ningli WANG
(China)

SECRETARY



Poemen CHAN
(Hong Kong, China)

CONVENER



Michael BELIN
(United States)

COORDINATOR



Charles MCGHEE
(New Zealand)

CONVENER



Tanuj DADA
(India)

COORDINATOR



Keith MARTIN
(Australia)

Cornea,
External Eye
Diseases and
Eye Banking

Intraocular
Inflammation,
Uveitis and
Scleritis

Glaucoma and
Glaucoma
Surgery

Neuro-
Ophthalmology



SCIENTIFIC PROGRAM COMMITTEE

Ocular Imaging

CONVENER



Ki Ho PARK
(Republic of Korea)

COORDINATOR



Akira KOBAYASHI
(Japan)

Ocular Oncology and Pathology

CONVENER



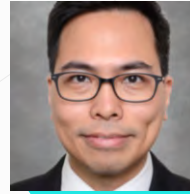
Martine JAGER
(Netherlands)

COORDINATOR



Santosh HONAVAR
(India)

COORDINATOR



Christopher LEUNG
(Hong Kong, China)

SECRETARY



Yumeng WANG
(Hong Kong, China)

COORDINATOR



Bertil DAMATO
(United States)

SECRETARY



Ling-ping CEN
(China)

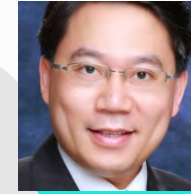
CHAIR



Charles MCGHEE
(New Zealand)



CONVENER



Hunter YUEN
(Hong Kong, China)

COORDINATOR



Timothy SULLIVAN
(Australia)

CONVENER



Frank MARTIN
(Australia)

COORDINATOR



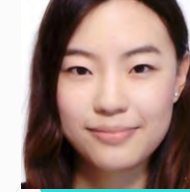
Sonal FARZAVANDI
(Singapore)

COORDINATOR



Dongmei LI
(China)

SECRETARY



Stacey LAM
(Hong Kong, China)

COORDINATOR



Jason YAM
(Hong Kong, China)

SECRETARY



Xiujuan ZHANG
(Hong Kong, China)

Orbital and Oculoplastic Surgery

Pediatric Ophthalmology and Strabismus

SCIENTIFIC PROGRAM COMMITTEE

Ophthalmic Epidemiology and Prevention of Blindness

CONVENER



Ava HOSSAIN
(Bangladesh)

COORDINATOR



Nathan CONGDON
(United Kingdom)

Refractive Surgery

CONVENER



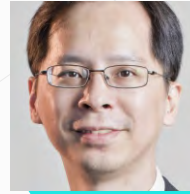
Gerard SUTTON
(Australia)

COORDINATOR



Ying LI
(China)

COORDINATOR



Ching-yu CHENG
(Singapore)

SECRETARY



Yuanbo LIANG
(China)

COORDINATOR



John CHANG
(Hong Kong, China)

SECRETARY



Riping ZHANG
(China)

CHAIR



Charles MCGHEE
(New Zealand)

CONVENER



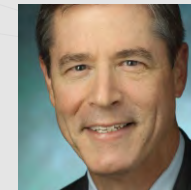
Paisan RUAMVIBOONSUK
(Thailand)

COORDINATOR



Srinivas SADDHA
(United States)

CONVENER



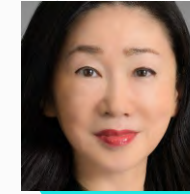
Neil BRESSLER
(United States)

COORDINATOR



Youxin CHEN
(China)

COORDINATOR



Kyoko OHNO-MATSUI
(Japan)

SECRETARY



Li Jia CHEN
(Hong Kong, China)

COORDINATOR



Timothy LAI
(Hong Kong, China)

SECRETARY



Danny NG
(Hong Kong, China)

Retina 1
(Medical - Diabetes)

Retina 2
(Medical - Other)



SCIENTIFIC PROGRAM COMMITTEE

Retina 3
(Surgical)

CONVENER



Chi-chun LAI
(Chinese Taipei)

COORDINATOR



Andrew CHANG
(Australia)

COORDINATOR



Kenneth FONG
(Malaysia)

SECRETARY



Marten BRELEN
(Hong Kong, China)

CHAIR



Charles MCGHEE
(New Zealand)

CONVENER



Calvin PANG
(Hong Kong, China)

COORDINATOR



Yizhi LIU
(China)

COORDINATOR



Jie ZHANG
(New Zealand)

SECRETARY



Wai Kit CHU
(Hong Kong, China)

Translation
AI and
Visual
Sciences
Research

